



Product Service

# CERTIFICATE

No. Z2 17 12 22757 01005

**Holder of Certificate:** HAGS Aneby AB

Grännavägen 7  
578 23 Aneby  
SWEDEN



**Certification Mark:**



**Product:** Playground equipment

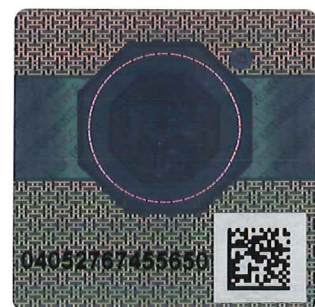
The product was tested on a voluntary basis and complies with the essential requirements. The certification mark shown above can be affixed on the product. It is not permitted to alter the certification mark in any way. In addition the certification holder must not transfer the certificate to third parties. See also notes overleaf.

**Test report no.:** 713124267-11

**Valid until:** 2022-12-26

**Date,** 2018-01-12  
Page 1 of 2

( Tobias Hofmann )





Product Service

## CERTIFICATE

No. Z2 17 12 22757 01005

### Model(s):

Cottage, Tittut, Grimmie, Circus, Zap, Laby,  
Epa, Eco Station, Banana, Hallon, Ljung,  
Mate, Sand mate, Danny, Flower, Flower + pedal,  
Sand table, Crano, Sandy, Calvin, Harry, Drax,  
Dan, Allan, Trico, Greta, Tot Tree, Toria, Leon, Nario,  
Maia, Patience, Labyrinth, Vagabond, Dashboard,  
Ship's wheel, Alphabet game, Letter game,  
Periscope, Picture game, Sorting game, Music panel,  
Noughts-crosses, Picture puzzle, Algebra, Pairs game,  
Cooker, Telescope, Speak, Speaking Tube, Flipper,  
Volta, Fence section, Fence post, La Casita

### Parameters:

#### Playhouse:

Cottage, Tittut, Grimmie, Circus, Zap, Laby,  
Epa, Eco Station

#### Play tables (sand):

Banana, Hallon (1.8/2.9m), Ljung, Mate, Sand mate,  
Danny, Flower, Flower + pedal, Sand table

#### Play tables (sand - water):

Crano, Sandy (solitary or in combination)

#### Play sculptures

Calvin, Harry, Drax, Dan, Allan, Trico, Greta,  
Tot Tree

#### Sandboxes:

Toria, Leon, Nario, Maia

#### Play Game:

Patience, Labyrinth, Vagabond, Dashboard, Ship's wheel,  
Alphabet game, Letter game, Periscope, Picture game,  
Sorting game, Music panel, Noughts-crosses,  
Picture puzzle, Algebra, Pairs game, Cooker,  
Telescope, Speak, Speaking Tube, Flipper, Volta,  
Fence section, Fence post, La Casita

Material: Plywood, pine, oak, HPL, steel,  
recycled plastic and  
rotationally moulded polyethylene.

Steel material: powder-coated and pre-galvanized.

#### Anchoring option:

Sunken concrete base  
Sunken steel base/frame  
Concrete foundation on site  
Anchoring on concrete (expansion bolt)

### Tested according to:

DIN EN 1176-1:2017  
EN 1176-1:2017

### Production Facility(ies):

02994

Page 2 of 2

THF